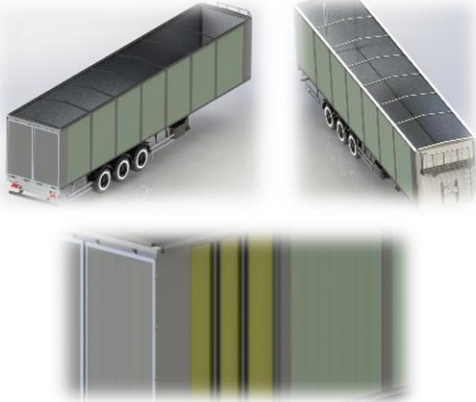


Dimensions:

Total Length	: 13.600 mm
Total Width	: 2.550 mm
Total Height	: 4.000 mm
Approximate Usable Volume	: 78 - 80 m ³
Tare Weight of Semi-Trailer	: 9.000 kg

* Technical drawing is submitted with the offer

* Producer; reserves the right to make changes in technical dimensions and specifications without prior notice

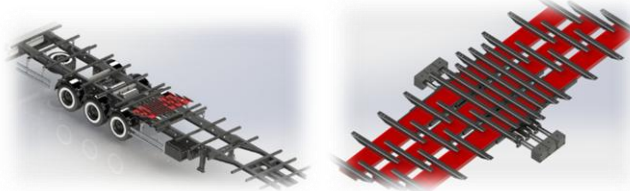


Body / Chassis:

Manufactured from high-strength steel by using gas metal arc welding. Chassis, frame and backbone structure are suitable for heavy-loads and difficult site conditions and designed for aesthetic appearance and durability. Used materials:

- Main chassis metal parts '**ST52**' quality steel
* If two side walls are fixed; side wall's interior is aluminum plate, exterior is aluminum profile
- Hydraulic unit coupled (directly connection)
- Remote wireless-control system
- Discharge curtain and 24V DC motor
- Hydraulic system chassis is bolt connected
- Centering profiles are mounted on the chassis for linearity

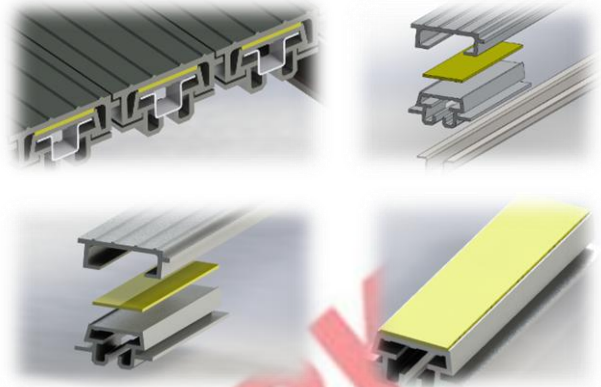
Optional: For forklift loads; 3x3800mm wide aluminum or metal covers on right and/or left side



Hydraulic Cylinders:

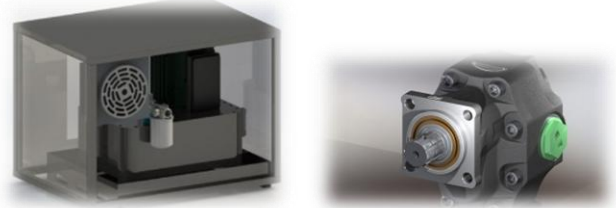
- 90/45 hydraulic cylinders for each group of 7 moving profiles (dismountable structure)
- Hydraulic cylinder strokes are 250 mm
- Feed time is approx. 8 seconds, return time is approx. 4 seconds. 1 cycle time is approx. 12 seconds. Unloading time is about 15 minutes
* All of specified times; it varies according to the pump and PTO characteristics of tractor

Moving Floor Profiles:



- Aluminum profiles are one-piece extrusion profiles manufactured from AL6000 series
- Friction absorbing PE1000 plates between each top and bottom aluminum profile
- 21 rows of moving profiles in groups of 7
- Moving profiles can be easily changed, bolt connected
- Centering profiles are welded on the chassis for linearity

Control Unit - Hydraulic Valves - Pump:



- 80 liter/min gear type pump works with the PTO drive of the towing vehicle
- 150-liter hydraulic oil tank and apparatus
- Hydraulic oil filter (optional)
- NG10 block valve (oil pressure/system speed can be controlled manually by valve)
- 3 pcs, 'NG16 type, double coil 24V' valve
- 1 x 'NG16 type single coil 24V' valve
- 1 pressure relief (return) valve (adjustable) at the main hydraulic line inlet

Electric Panel & Wireless Remote Controller:

- Electric panel is mounted on the semi-trailer
- System can be controlled with an ergonomic remote wireless-control device
- System control hardware and command control unit are in the electric panel



Axles (ECE R13.11 Compatible):

- 3 axle, each one 9 ton capacity, optional 12 ton
- Disc or optional drum brake type, 22.5" rim size
- Optional 19.5" rim size with compatible tires
- Front 1 axle liftable and controlled from cabin
- Optional other axle & suspension combinations
- Optional European origin axle options

Suspension System (ECE R13.11 Compatible):

- Air suspension system hardware
- 813 type air suspension bellows
- Z type, double layer leaf spring 70 mm
- Optional 100x35mm size leaf spring
- Shock absorbers
- Air suspension valves "Wabco or Knorr"

Brake System (ECE R13.11 Compatible):

- Dual circuit (2-line) brake hardware
- 30" service brake chambers
- 30x30" spring (emergency) brake chambers
- Automatic brake / slack adjusters
- Load balancer distribution valve
- 2S/2M EBS (Electronic Braking System)

Electrical Hardware (ECE R48.05 Compatible):

- 24 Volt lighting hardware
- 2x7 pins electrical socket and distribution cable
- 7-function 2 tail light, 4x2 side, 2 front lamps
- Other required hardware for traffic regulations

Tires: Good Year - Pirelli - Bridgestone - Lassa
6 units 385/65 R22.5" size tubeless tyre and
22.5x11.75" size rim set (no spare tire)

Optional 435/50 R19.5" size 6 tyre and
19.5x14.00" size rim set (with only 19.5" axle)

Optional 1 pcs tyre and compatible rim set

King-Pin (ECE R55.01 Compatible):

8 bolt-connected 2" head (interchangeable with
3,5" head) king pin, SAE/DIN norms, D:190-260 kN

Semi-Trailer Landing Gear Set:

Mechanically two-speed semi-trailer landing gear
(landing leg) set with a capacity of 24 tons

Painting: Metal parts are sand-blasted, painted
with 2-layers anti-corrosive epoxy primer then top
acrylic paint coat with up-to-date RAL colour

Standard Accessories:

- 6 x FRP mudguard
- 1 x Axle nut removal tool / wrench
- 1 x Spare wheel carrier / holder (optional)
- 1 x Fire extinguisher tube cabinet
- 1 x Water tank "chrome nickel or plastic"
- 1 x Wheel chock and holder
- 1 x Lockable tool box
- Lateral protection devices / side guards
- Ladder
- Optional foldable rear bumper

Warranty: Our products are under 1 year
warranty against manufacturing defects

* 5-years spare parts supply warranty

Unit Price (EXW & Konya / TURKEY):

- Euro / Each 1 unit - EXW price
- 3x3800mm wide side covers on each 1 side
wall price difference is Euro
- * Export or export registered invoice price
- * Price is valid for 7 days from the date of offer
- * Optional features provide with extra charge

Payment Terms:

- %60 prepayment, %40 in advance of delivery

Delivery: 25 working days / up to 5 units

* Delivery time is variable with order date

* Our product 'EC vehicle type approval' certified

* Our company 'ISO 9001:2015 QMS' certified

* Delays and incompatibilities arising from force
majeure are not taken into account



Moving Floor Semi-Trailer (Standard Wall)



Moving Floor Semi-Trailer (Wall with Side Cover)



Moving Floor Semi-Trailer (Wall with Side Cover)